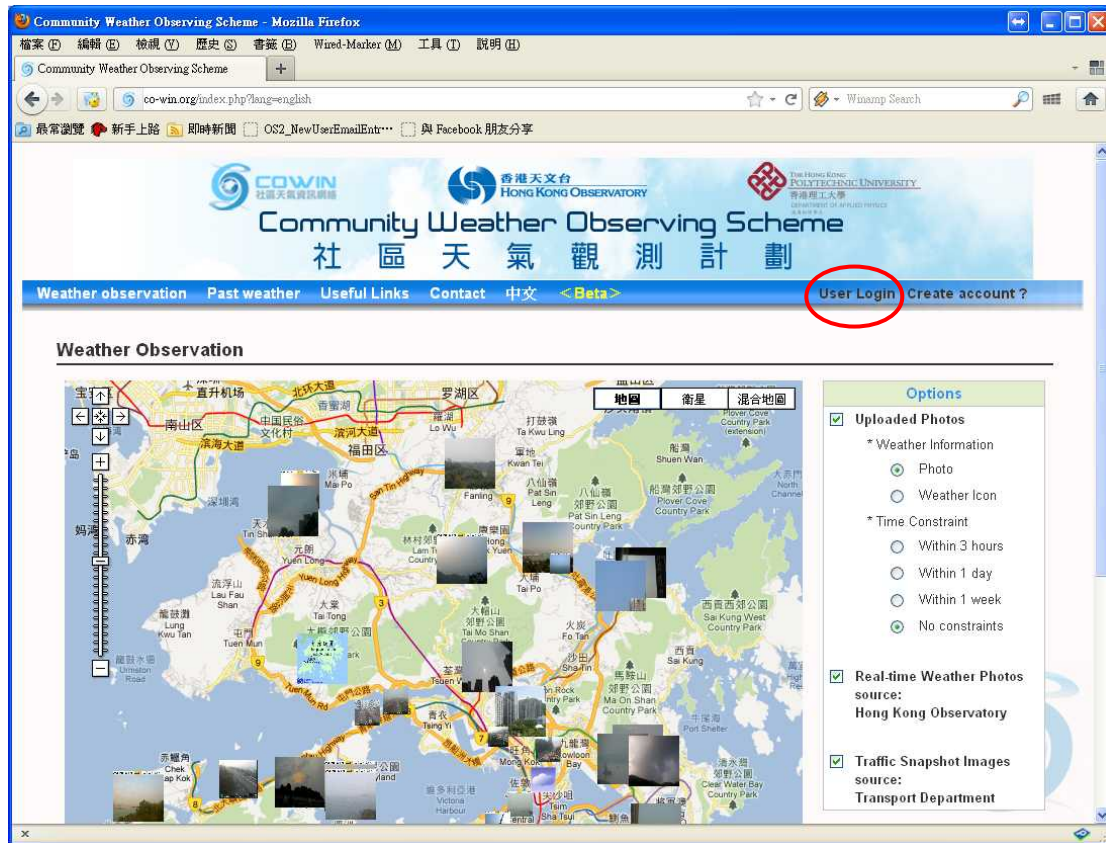
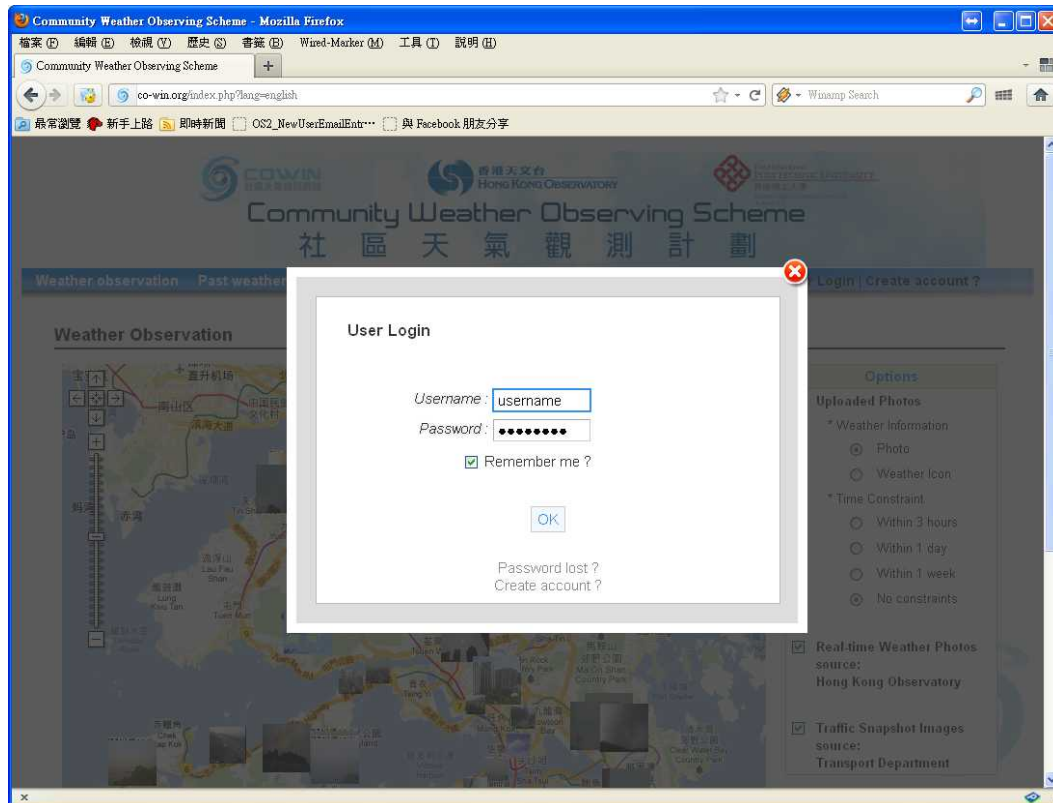


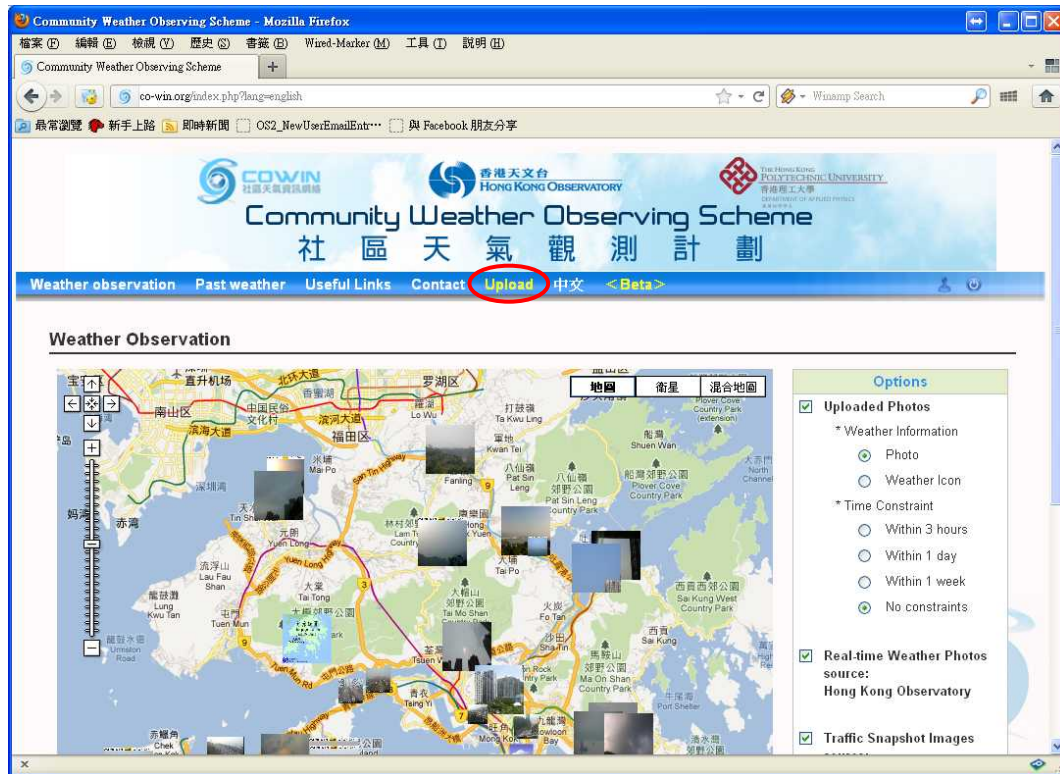
Website: <http://co-win.org/index.php?lang=english> ; Click “User Login”



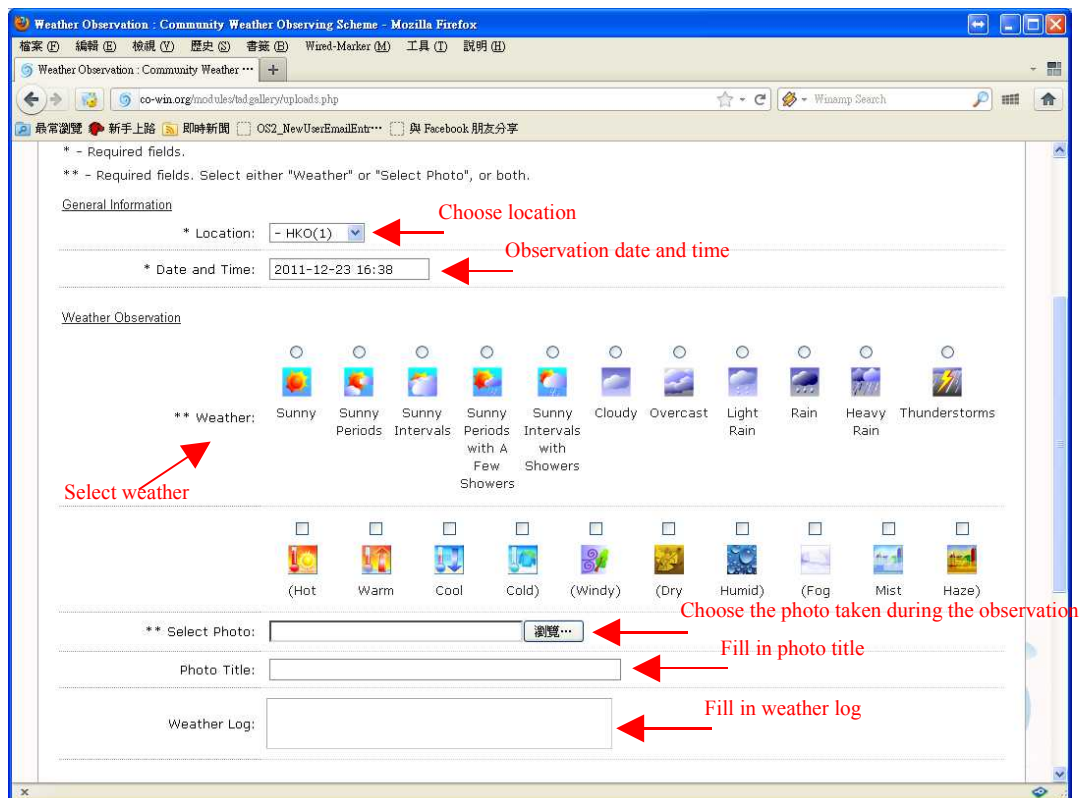
Fill in the username and password



Click "Upload"



Fill in the form



If you know how to measure the visibility, you can fill in the estimation.

Choose the visibility

The screenshot shows a web form titled "Other Observations" with the following fields and annotations:

- Visibility:** Radio buttons for "Poor (below 5km)", "Fair (5-10km)", and "Good (over 10km)". A red arrow points to this section with the text "Choose the visibility".
- Estimated Visibility:** A text input field followed by "km". A red arrow points to this field with the text "If you know how to measure the visibility, you can fill in the estimation.".
- Hourly mean UV Index:** A text input field followed by "UV Index" and a "(Reference Link)". A red arrow points to the link with the text "Go to the links and fill in the data.".
- API at nearby EPD station:** A text input field followed by "API" and a "(Reference Link)". A red arrow points to the link with the text "Go to the links and fill in the data.".
- RSP at nearby EPD station:** A text input field followed by "ug/m3" and a "(Reference Link)". A red arrow points to the link with the text "Go to the links and fill in the data.".
- Agreement:** A checked checkbox followed by "I agree to be bound by these Terms of Use.".
- Submit:** A green "Upload" button circled in red. A red arrow points to it with the text "Click Upload.".

At the bottom of the form, there is a "Terms of use" link and a footer note: "Interested parties, schools and organizations are welcome to join the scheme. For enquiries, please contact: cawin@hko.gov.hk."

Done !



Example :

